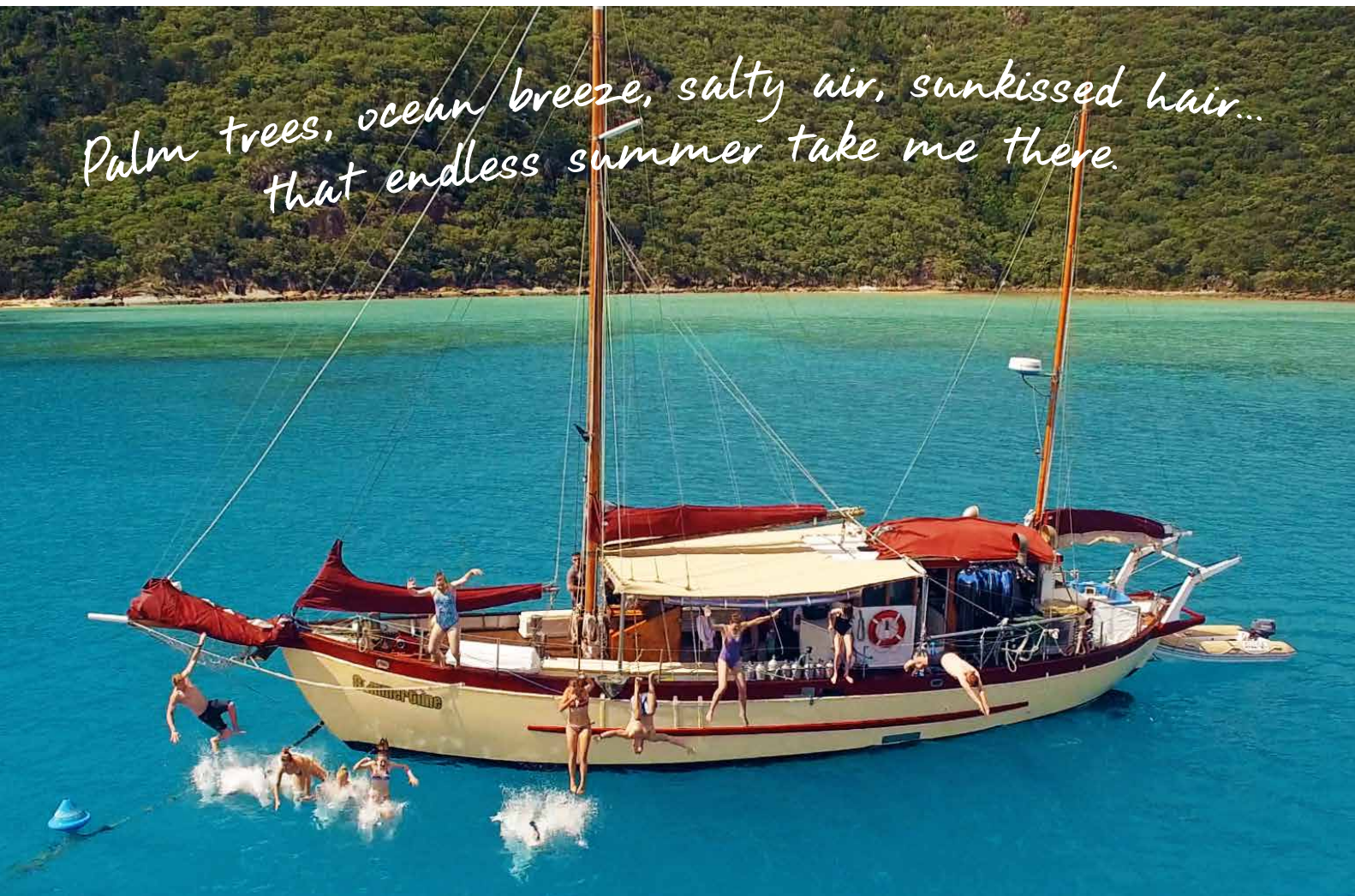


Summertime

2 days 1 night
Sail the Whitsundays



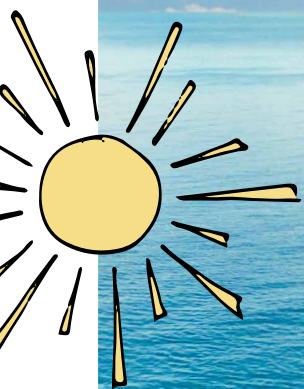
*Palm trees, ocean breeze, salty air, sunkissed hair...
that endless summer take me there.*



 Whitsundays
Sailing Adventures

summertime-whitsundays.com


CERTIFIED
Ecotourism



Sail
Snorkel
Kayak

Discover Freedom

Sail around the Whitsunday Islands aboard a 70 year old ketch for a full 2 days/1 night adventure. Sleep in our comfortable air-conditioned cabins and wake to a beautiful island sunrise on our classic vessel Summertime.

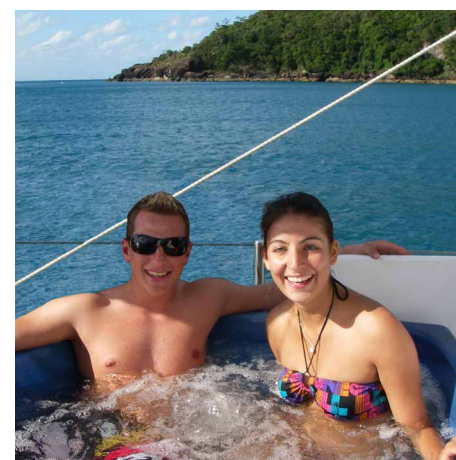
Lovingly restored this 63 foot ketch is designed for adventure while also boasting a comfortable saloon and spacious deck area where guests can relax and enjoy the amazing sunsets.

Renowned for its amazing aqua blue water, snorkelling and countless tropical beaches you will discover a world of pure wonder as you stay and play around the Whitsundays. Laze on the famous Whitehaven Beach, snorkel fringing reef in the World Heritage Marine Park and find your own piece of paradise.

With sufficient kayaks for all on-board, our friendly guide will take you on an eco-friendly exploration of beautiful hidden inlets and fringing reefs to be at one with nature, a truly 'unforgettable' experience.



Hill Inlet and Whitehaven Beach



Jacuzzi



Air Conditioned

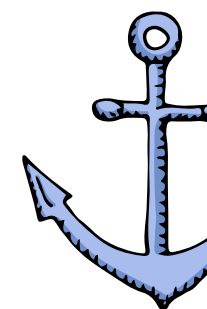
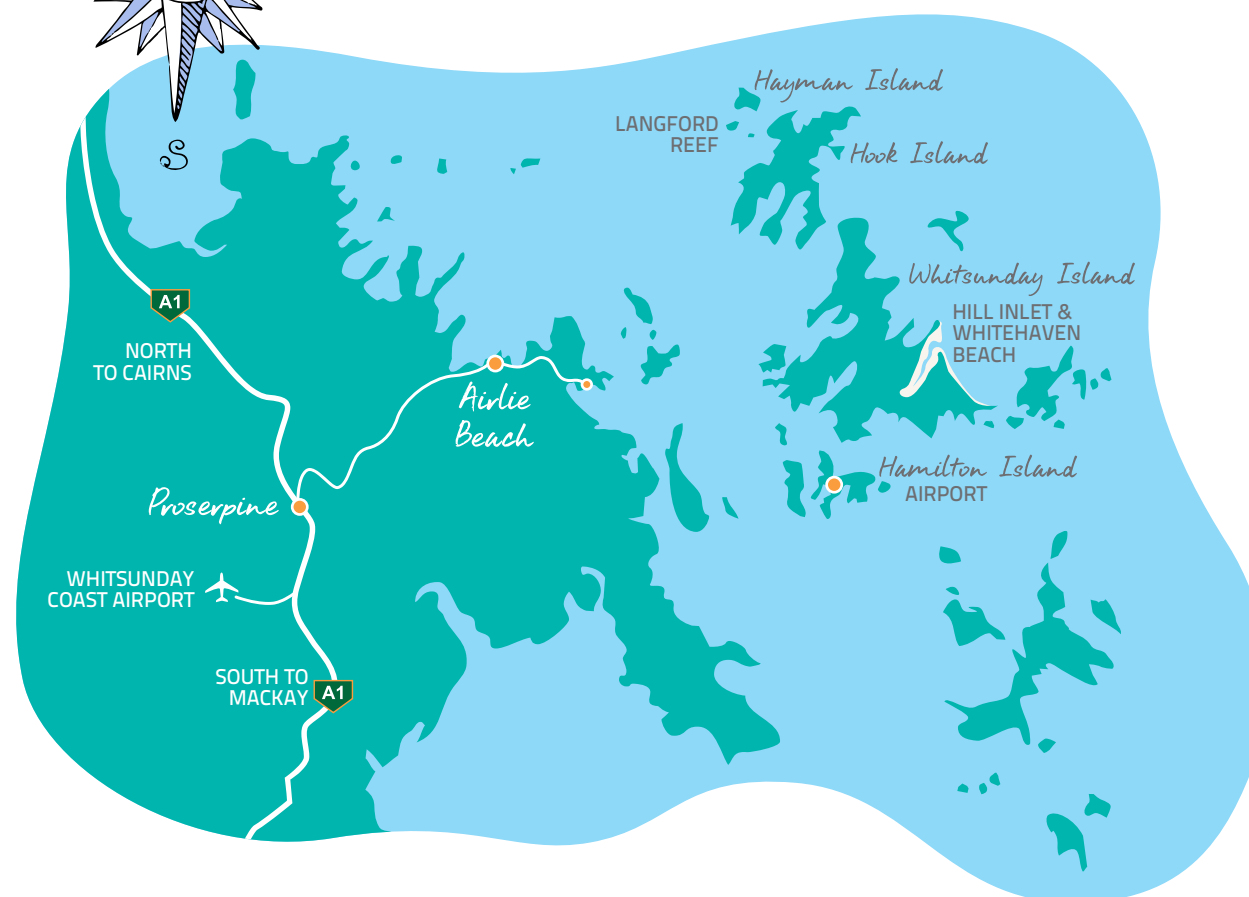
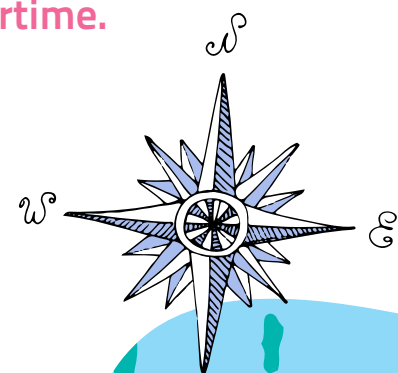


Inclusions:

- 2 full days/1 night sailing
- Fresh water jacuzzi
- Meals freshly prepared on board
- Linen and bath towel
- Wetsuits, snorkelling gear
- Kayaks for all guests
- Marine Park fees

Accommodation:

- Fully air-conditioned
- Only 19 passengers
- Private double cabin
- Single, double or triple share rooms
- Comfortable saloon area
- Spacious deck area & shade awnings
- Separate male & female amenities



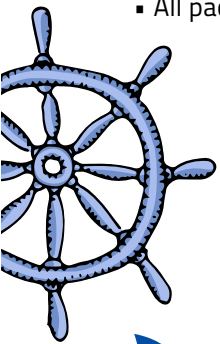
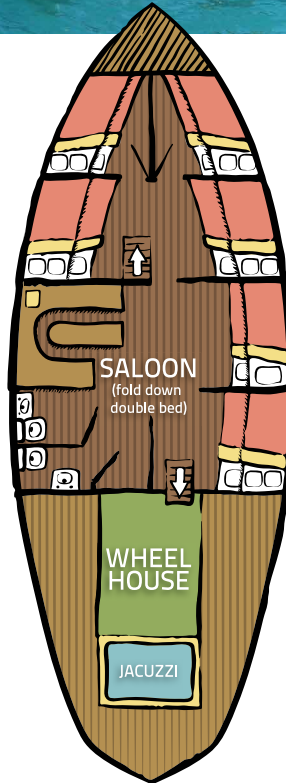


Departs Abell Point Marina:

Departs	Returns
8.30 am	4 pm
Monday	Tuesday
Thursday	Friday
Saturday	Sunday

What to bring:

- Swimwear, hat, sunglasses & sunscreen
- Warm clothing for our cooler nights
- Personal toiletries & beach towel
- BYO alcohol - no glass please
- All packed in a soft bag provided at check in



Check in

The day prior to trip
Pre-departure brief with
our reservation agent



Agent Booking Hotline:

1300 653 100

Phone: +61 (0) 7 4940 2000

Email: info@summertime-whitsundays.com

www.summertime-whitsundays.com

402 Shute Harbour Road Airlie Beach
Queensland, Australia 4802



#summertimewhitsundaysaustralia



TERMS & CONDITIONS

- Cancellations less than 14 days prior to trip result in complete forfeiture of price paid.
- Credit card surcharge of 2% applies.
- Prices are based on multi-share accommodation unless specified with full crew and meals and do not include air fares.
- Travel insurance is recommended, clients should note adventure travel involves risks & whilst we make every effort to safeguard guests, we cannot be responsible for any damage, personal injury or loss due to the actions of passengers that are beyond our control.
- All departures and itineraries are subject to weather and may be changed at our discretion.
- We reserve the right to substitute vessels without notice at any time for any reason.
- Stinger season is from October to May and passengers are recommended to wear full length protective stinger suit (provided on vessel) while swimming and snorkelling.
- Passengers enter the water at their own risk & owners/operators of the vessel will not be liable for any personal injury, illness, death, jellyfish stings or any other consequences whatsoever.

